

Uniclass L7522	EPIC L22
CI/SfB (56.84)	X



Wireless Heating Systems

## COMPACT FAN ASSISTED ROOM HEATERS with Wireless Time and Temperature Control



POWDER COATED SILVER

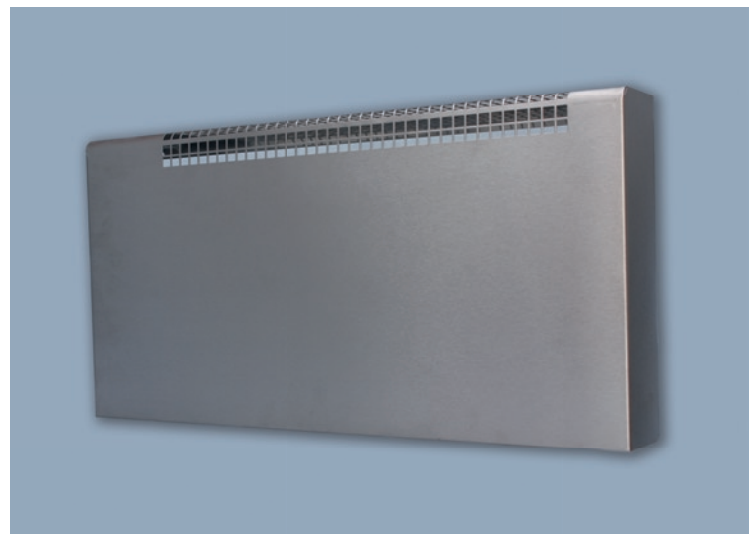


POWDER COATED WHITE

• INCREDIBLY QUIET FAN (38dB) • 3 FINISHES • WIRELESS CONTROL



POLISHED MIRROR STAINLESS STEEL



BRUSHED STAINLESS STEEL

A simple to install wireless controlled heating system for the whole home.  
Perfect for conservatories, village halls, schools and offices that require rapid warmth.  
Mount the heaters 5 feet high to avoid bumping into them.

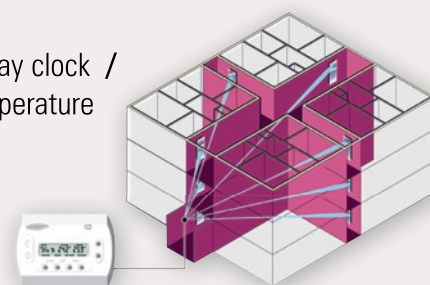
## RADIATOR (RECEIVER) KEY FEATURES:

Simply wire the heater to a fuse spur / Hidden wiring / No need to manually switch heaters "on" or "off"

## WIRELESS CONTROLLER (TRANSMITTER) KEY FEATURES:

Keylock mode / Simple to Programme / Up to 6 temperature settings per day / 7 day clock / Advance mode / Economy mode / Holiday mode / Boost Mode / Inbuilt room temperature sensor / Frost protection / Powered by 2 x 1.5v Alkaline batteries

The TX control unit sends a 433MHz radio signal to each "registered" heater within a radius of 30 metres. Each RX panel heater has an inbuilt receiver designed to respond to a signal from the WCT 100/RX.



## HOW THE 2KW FAN ASSISTED HEATER WORKS:

The 2kW fan assisted heater is designed to work with the WCT100TX controller. Using a WCT100TX, every day of the week can have up to six different room temperature settings programmed for times to suit the occupants of the property concerned.

When 'Actual Temperature' shown in the WCT100TX display is below 'Target Temperature,' a radio signal pulse is sent to the heater thus calling for heat. Communication continues regularly whenever heating is called for.

When the actual temperature approaches the current target temperature, heating output will reduce in steps, and will cycle up and down depending upon room temperature variation.

The fan may drop if heat output requirement is low (approximately 400 watts or less) during which time the unit will function as a conventional convector heater. Running costs will depend upon the room size, building type, insulation, whether windows are double glazed, etc.

## SPECIFICATION:

LINE REF	CODE	DIMENSIONS (W X H X D)	ELEMENT (WATTS)	OUTPUT (WATTS)	OUTPUT (BTU'S)
<b>Powder Coated White</b>					
15.1	LST 2000/C/60/WM/PC/RX	600 x 300 x 80	2000	2000	6824
15.2	LST 1500/C/60/WM/PC/RX	600 x 300 x 80	1500	1500	5118
<b>Powder Coated Silver</b>					
15.3	LST 2000/C/60/WM/PCS/RX	600 x 300 x 80	2000	2000	6824
15.4	LST 1500/C/60/WM/PCS/RX	600 x 300 x 80	1500	1500	5118
<b>Powder Coated Black</b>					
15.5	LST 2000/C/60/WM/PCB/RX	600 x 300 x 80	2000	2000	6824
15.6	LST 1500/C/60/WM/PCB/RX	600 x 300 x 80	1500	1500	5118
<b>Brushed Stainless Steel</b>					
15.7	LST 2000/C/60/WM/SS/RX	600 x 300 x 80	2000	2000	6824
<b>Mirror Finish</b>					
15.8	LST 2000/C/60/WM/MF/RX	600 x 300 x 80	2000	2000	6824

Sharrocks Street, Wolverhampton WV1 3RP

Tel: **01902 457575** Fax: **01902 457797** Email: **sales@ecolec.co.uk** Website: **www.ecolec.co.uk**